



Effect of type of lead vehicle on following headway behaviour in mixed traffic

Ravindra Kumar

*Transportation Planning Department, CSIR-Central Road Research Institute,
Delhi, India and Transport Research Institute, Edinburgh, UK*

Purnima Parida

*Transportation Planning Department, CSIR-Central Road Research Institute,
Delhi, India, and*

Wafaa Saleh

Transport Research Institute, Edinburgh, UK

Abstract

Purpose – There is gap in literature on understanding of the issues of following headway behaviour of the driver and a lack of sufficient data in different traffic conditions. The purpose of this paper is to find the effects of type of lead vehicle on following headway in mixed traffic condition in India on different category of roads and flow.

Design/methodology/approach – Real-world headway data were collected through video and extracted. Data were analysed using tools and statically approach was adopted to present the results in detail.

Findings – Results shows the impact of type of lead vehicle on driver following time headway behaviour under different level of traffic and types of road characteristics. It was found that driver following behaviour is affected by the type of lead vehicle. It also shows that drivers are inconsistent in their choice of headway.

Research limitations/implications – This research has special strategic study area of India in typical two cities Silchar and Shillong of northeast region of India. The traffic characteristic and composition is quite different as compared to other cities of India. Therefore the study results cannot be generalized for whole India.

Practical implications – The result of the study has focused on impact of type of lead vehicle on following behaviour. This can be useful to safety reduction and changing the driver behaviour through education and display of information. However, the real application of this result is to be implemented by local transport and road managing authority to reduce accidents and increase safety of drivers.

Originality/value – In mixed traffic conditions, the impact of type of lead vehicle on following behaviour affects the safety of drivers and the accounting for such behaviour is never been explored in mixed traffic condition. If the study is implemented, it can be useful to simulation modeller and intelligent transport systems (ITS) to design and operate many in-vehicle systems for smooth traffic processes.

Keywords Technology, Sustainable development, Sustainable environment, Science, Driver behaviour, Research institutions

Paper type Research paper



Introduction

The “time headway” or “headway” is “the time, in seconds, between two successive vehicles as they pass a point on the roadway, measured from the same common feature of both vehicles” (Highway Capacity Manual, 2000). This parameter is one of the fundamental microscopic traffic flow characteristics. These characteristics are of great importance for planning, analysing, designing and operating roadway systems (Jakimavicius and Burinskiene, 2009; Mesarec and Lep, 2009). Therefore, it must be analysed as accurately as possible based on the real behaviour of drivers (Kerner, 2009). Traffic engineers and planners should be well aware of the real behaviour of drivers in choosing the desired headways. In fact, they should be able to predict the driver’s behaviours while facing the headways in order to have better planning and traffic management through different conditions. This is because time headways and their distributions affect different flow parameters, including capacity, level of service and safety (Arasan and Koshy, 2003). Precise modelling and analysis of vehicle headway distribution helps traffic engineers to maximize roadway capacity and minimize vehicle delays (Zhang *et al.*, 2007).

Headway distributions are also needed to run digital simulations through modelling multilane traffic in driving simulators (Zwahlen *et al.*, 2007). Moreover, with headway analysis it is possible to get information from the causes of accidents and the ways of increasing the road safety. It should be pointed out that in most capacity modelling, the safety headway requirement is not taken into account during the model calibration and parameter estimation. This may partly explain why some problems are often experienced on roadways carrying less traffic than the perceived capacity (Yi *et al.*, 2004).

Brackstone *et al.* (2009) observed that drivers follow more closely behind trucks/van than cars. Postans and Wilson (1983) found that a frequency of headway of less than half a second varies by vehicle types. However, they were unable to quantify the magnitude of the variation of headway. Evans and Rothery (1976) found that different size of lead cars had no effect on following distance, while Parker (1996) measured individual headway for a population of drivers passing through a road work section (approximately 25m in each case) and found no difference between cars following cars as opposed to cars following trucks in the 60-70 km/hr speed band, and a small difference in the 20-30 km/hr speed band (with cars being followed at approximately 12m and trucks at 10m). Sayer *et al.* (2003) analysed the differential behaviour between cars and light trucks. They also supported the finding that light trucks would follow 6-7 m closer than normal cars because truck drivers are less likely to misjudge any situations. Truck braking frequency and magnitude may be perceived as lower, hence the leading car driver views them as a safer and more predictable vehicle to be behind. The authors also suggested that drivers following a truck may have a reduction in driving workload, as there is now only one vehicle on which to concentrate, which results in a reduction in glance distributions. This gives the driver a greater degree of preparedness for deceleration, in turn encouraging an unconscious reduction in headway.

In Surat city, Katti *et al.* (1985) found through their study on arterials that for volumes ranging from 500 to 1,000 vehicles/hr, negative exponential distribution was suitable for representing headways between vehicles. Mukherjee *et al.* (1988) evaluated the suitability of negative and shifted negative exponential distributions to generate vehicles approaching roads at the intersections in Calcutta, India.

The suitability of theoretical distributions was judged by using the χ^2 test. It was found that the shifted negative exponential distribution gave a close fit for the observed headways. It was suggested that a comparison of theoretical headway distributions along with the observed distributions could be made based on cumulative frequencies. However, in all such studies conducted in India and abroad, very little has been done to understand the effect of type of lead vehicle on headway. All these studies are limited to consideration of the relationships between immediately following vehicles such as cars only.

This paper gives special attention to region-specific needs in vehicle-following behaviour. It aims to bridge the gap between different geographical areas, in terms of the safety of the driver in following the vehicles. The study recognizes the fact that for numbers of drivers following the auto-rickshaw, buses are much less frequent when compared to cars. The average speed in Shillong was found to be higher than in Silchar. Three focus areas of traffic, namely: following headway, speed and frequency are examined in detail for plain and hill roads related to improvement and safety of traffic for all, thus initiating and sustaining the growth process.

Experimental methodology

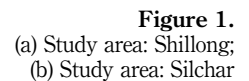
Characteristic of case study area

The “North Eastern Region Vision (2008)” of India stated the north eastern region as the “land of the rising sun” as the springboard for economic integration with Southeast Asia, southwest China and beyond. The region has largely remained isolated and hence underdeveloped and the study recognizes the strategic importance of the region in India’s foreign policy in general and the Look East Policy (LEP) in particular. Silchar is the headquarters of the Cachar district in the state of Assam in India. It is 343 km (213 m) southeast of Gauwahati. It is the second largest city of Assam after Gauwahati, both in terms of population and municipal area, with an elevation of 22 m (72 ft). The area of Silchar town is 15.75 km².

Shillong (Khasi: Shillong) is the capital of Meghalaya, one of the smallest states in India. It is the headquarters of the east Khasi Hills district and is situated at an average altitude of 4,908 feet (1,496 m) above sea level, (70 times higher than Silchar city) with the highest point being Shillong Peak at 6,449 feet (1,966 m). Shillong is the 330th most populous city in India, with a population of 143,007 according to the 2011 census. It is said that the rolling hills around the town reminded the European settlers of Scotland. Hence, Shillong is known as “Scotland of the East”. The population density of the state of Meghalaya in the current decade is 342 people/sq. mile. Shillong is at 25.57°N, 91.88°E. It is on the Shillong Plateau, the only major uplifted structure in the northern Indian shield. The city lies in the centre of the plateau and is surrounded by hills, three of which are revered in Khasi tradition: Lum Sohpetbneng, Lum Diengiei and Lum Shillong. Its weather conditions are pleasant, and pollution-free in summer. The temperature varies from 23°C (73°F) to 4°C (39°F) in winter. Shillong, the capital city of Meghalaya is just 55 km (34 miles) from Mawsynram, the world’s wettest place. Shillong receives far less precipitation due to the orographic effect. The location marked on the study area is shown in Figure 1(a) and (b).

Data collection

An instrumented vehicle Video VBox was used in the car to follow the heavy vehicles that recorded a video picture of the driver in real traffic with a roadside video. Road NH3 and NH4 test routes were selected both in urban and free driving conditions in the



morning, noon and evening peak in Silchar city. Similarly, in Shillong, five roads were selected both outside and inside the city.

Data were collected in two different types of road conditions: one free, and one congested, in April 2012 and January 2013. The headway speed driving cycle data were carried out on different days at different sections. Data used for this study was collected for Silchar, Assam and Shillong, with both free flow and congested traffic types. The flow was interrupted because of intermingling of opposite vehicles, as there were no separators on the roads.

The data were collected through video recording and manual mode, both at different locations with different trap lengths. The camera was mounted on a vantage point for 15-minute intervals on a typical weekday. Simultaneously, manual data were also calculated for verification purposes. All the vehicles that passed through the selected section of road during that time were recorded and classified into different categories, as shown in Plate 1. From the video data, arrival and departure time of each vehicle was calculated.



The data were extracted from the video clip from the following headway template using coding for the lead and following vehicles that also generated traffic volume. Headway, speed data and arrival pattern for each vehicle type were extracted for each section in both free and forced traffic conditions.

Data analysis

Selection of variables in data set. Seven variables were used in this study. Three involved the vehicles, in both the dynamic states of free and constrained conditions:

- (1) Response variable time headway between vehicles (T Hses) calculated as the following distance divided by the speed of the following vehicle.
- (2) Distance was directly measured from the trap length rear of the preceding vehicle to the front vehicle in the active case and the front of the following vehicle to the rear of the instrumented vehicle in the passive case. In this study, the passive case has been followed.
- (3) Two potential explanatory variables: the ground speed of the following vehicle (V_{ms-1}) and relative speed between two vehicles ($V1-V2$). The value indicates the higher speed of the following vehicle.
- (4) Time headway has been chosen as the primary indicator of driver performance.
- (5) Four situational variables:
 - SUB.
 - Type of leading vehicle (VEH, car, trucks, two wheeled, LCV, cycle, cycle rickshaw, hand cart).
- (6) Road type (road, NH, urban city road).
- (7) Flow (FLOW, vehicles/hrs). Flow was calculated based on video recording on each test section.

Traffic characteristic of selected section in Silchar

Traffic composition in Silchar

Traffic flow at Jani Gunj section (down) is congested and within the centre of Silchar city. The traffic composition is as follows: 43 per cent rickshaw, 22 per cent cycles, 15 per cent two-wheeled, 4 per cent car, 7 per cent hand cart, 5 per cent scooter and

2 per cent light commercial vehicles (LCV). There were 22 per cent rickshaw, 26 per cent cycle, 26 per cent two-wheeled, 10 per cent car, 7 per cent hand cart, 26 per cent scooter and 32 per cent LCV.

Upstream Sonai Road. The traffic composition is as follows: 24 per cent cycles, 34 per cent two-wheeled, 6 per cent small car and 11 per cent sport utility vehicle (SUV), 19 per cent auto-rickshaws, 7 per cent hand cart, 3 per cent truck and 2 per cent LCV and 1 per cent buses in the congested conditions of Sonai road in upstream. In free flow conditions, LCV/tempo increases from 2.5 to 21 per cent, which shows that outside the city, tempo is being used by commuters to connect to other parts of the city. The same patterns were reflected in the case of SUV (Tata Sumo type vehicle used for passenger carrier), which increased from 11 per cent in congested conditions to 19 per cent in free flow conditions. The number of bikes reduced from 34 to 21 per cent in free flow conditions. The percentage of auto-rickshaws remained the same in both free and congested conditions, which reflect the fact that auto-rickshaws are going outside the city as passenger carriers, both inside and outside the city. The increase in cycles from 3 to 21 per cent shows the local influence of the cycle mode used for commuting between villages in free flow conditions.

Downstream Sonai road. There were 27 per cent cycles, 28 per cent two-wheeled vehicles, 6 per cent small cars and 10 per cent SUV, 22 per cent auto-rickshaws, 2 per cent trucks and 1 per cent buses in the congested conditions of Sonai road in downstream. In free flow conditions, LCV/tempo increases from 0.5 to 10 per cent, which shows that outside the city, tempo is being used by commuters to connect other parts of the city. The same patterns were reflected in the case of SUVs (Tata Sumo type vehicle used for passenger carrier), which increased from 10 per cent in congested conditions to 13 per cent in free flow conditions. The number of bikes reduced from 28 to 30 per cent in free flow conditions. The percentage of auto-rickshaws remained the same in both free and congested conditions, which reflects the fact that auto-rickshaws are going outside the city as passenger carriers, both inside and outside the city in Silchar. The decrease in cycles from 27 to 9 per cent from congested to free flow shows the local influence of the cycle mode used for commuting between villages in free flow conditions. In both the up side and the down side, cycle composition in congested traffic was 24-27 per cent, two-wheeled 34-28 per cent, small cars 6-10 per cent and big cars 10-11 per cent, auto-rickshaws 19-22 per cent, truck 2-3 per cent and 1 per cent buses. In free flow conditions in both the up side and the down side, cycle composition was 21-9 per cent, two-wheeled vehicles 21-30 per cent, small cars 4-6 per cent and big cars 10-11 per cent, auto-rickshaws 20-21 per cent, trucks 0-7 per cent and 1 per cent buses. This indicates an increase in the proportion of trucks, and a decrease in the proportion of two-wheeled vehicles and cycles in free flow conditions.

Traffic characteristic of selected section in Shillong

There were 48-57 per cent cars and 8-16 per cent big cars, 15-22 per cent two-wheeled vehicles, 1-3 per cent buses, 7-9 per cent LCV, 1-3 per cent trucks, 1-11 per cent auto-rickshaws, 2 per cent LCV and 1 per cent buses in congested conditions in Shillong. In contrast, in free flow conditions, there were 35-56 per cent cars and 7-19 per cent big cars, 6-15 per cent two-wheeled vehicles, 2-6 per cent buses, 2-18 per cent LCV, 1-17 per cent trucks, and 1-9 per cent auto-rickshaws in free flow conditions in Shillong. So it is clear that there is a significant increase in the percentage of LCVs, trucks and buses, and a decrease in the percentage of auto-rickshaws in free flow conditions. In this case, buses are the main mode of inter-regional transport. It should be noted that

due to hilly terrain, the proportion of auto-rickshaws running in Shillong is less compared to those in Silchar.

Results and discussion

Different countries have slightly different rules with regard to the legal or recommended safety distance. In the USA, several drivers training programmes (Michael *et al.*, 2000) state that it is impossible to follow a vehicle safely with a headway of less than 2s. In Germany, the recommended minimum distance is “half the speedometer”, which means, a car travelling at 80 km/hr should keep a distance of at least 40 m. This rule translates to a recommended time headway of 1.8s. Fines are imposed when the time headway is smaller than 0.9s. In Sweden, the National Road Administration recommends a time headway of 3s in rural areas, and the police use a time headway of 1s as orientation for imposing fines. Researchers have investigated whether any connection between preferred time headway, accident involvement and driver characteristics exists, but the results were not consistent. Evans and Wasielewski (1982) claimed that drivers who keep longer time headways tend to have a history of fewer accidents and violations. On the other hand, one year later, the same authors stated that no reliable relation between preferred time headway and accident involvement could be detected. In a simulator study, Van Winsum and Heino (1996) investigated whether a closer following distance was connected to more expertise in accurately estimating time-to-collision (TTC), but the relationship they found was not significant. Michael *et al.* (2000) found that a substantial percentage of drivers in several urban locations did not observe the 2s rule, but compliance increased moderately when hand-held signs urged drivers to heed the rule. In the literature, different opinions can be found as to which value should be used as a safety limit – suggestions range from 1.5s in urban areas (Svensson, 1998) to 5s.

In Indian traffic conditions the effect of the leading vehicle on headway is not explored, which is the reason the traffic simulation model, driver safety behaviour and their risks are not properly understood. In the following section, the effect of different lead vehicles in both free and constrained conditions in mixed traffic conditions has been explored.

Effect of leading vehicle on headway in Silchar city

Effect of different leading vehicle type congested flow – Janigunj Road UP direction

Lead vehicle – auto-rickshaw (A). Drivers of buses, cars, rickshaws, two-wheeled and tempo feel safer when following an auto-rickshaw. Their time headway varies from 1.5 to 3.3s. However, <1.5s of headway is assumed to exceed the safety standard.

Lead vehicle – bus (B). Big cars, two-wheeled vehicles and hand carts do not want to follow a vehicle too close to a bus, as the speed of the bus impedes the speed of the following car compared to the auto-rickshaw. Their following headway varies from 2.6 to 6.6s, which is higher than the auto-rickshaw.

Lead vehicle – car (C). Except for the auto-rickshaw and the cycle-rickshaw, all vehicles including buses, cars and scooters were following the car at 1.3 to 2.4s. As the auto-rickshaw and rickshaw have lower operating speeds, they maintained following headway at 4.23 and 4.26s.

Lead vehicle – hand cart (CG). All vehicles including cars, auto-rickshaws, buses, cycle-rickshaws and two-wheelers were following very close to the hand cart, since it

impeded the speed of all motorized vehicles. Their following headway ranged from 0.65 s by two-wheeled vehicles to 2.28 s by rickshaws. This shows the risk level is higher for hand carts.

Lead vehicle – rickshaw (R). All vehicles, including cars, autos, hand carts, rickshaws and two-wheelers were following at > 2.5 s. The bus drivers feel secure even when there is a rickshaw in front. Time headway between the bus driver and the rickshaw was found to be the lowest, i.e. 1.94 s. This shows the risk levels are higher for rickshaws.

Lead vehicle – two-wheeled (S). Since the running speed of two-wheeled vehicles is higher, the time headways for following rickshaws, cars and auto-rickshaws were significantly > 5 s. Hand carts, buses and two-wheeled vehicles followed at the lesser headway of 1.85 to 2.3 s. This, again, compromises the safety standard.

Lead vehicle – big car (SUV). No other vehicles were found following the big cars except two-wheeled vehicles at a following headway of 2.3 s, since the running speed of big cars is high.

Lead vehicle – LCV (TE). The effects of LCV were significant. All vehicles were found to be safe and following very close to the time headway at 1.3 to 2.3 s. This shows the risk level is higher when there is LCV in front of vehicles.

Effect of different leading vehicle type – Janigunj Road DN direction

Lead vehicle – auto-rickshaw (A). No other vehicles except cycle-rickshaws followed the auto-rickshaw at a 4 s time headway interval.

Lead vehicle – bus (B). All vehicles (bus, car, hand cart and rickshaw) were following buses at a following headway greater than 6 s.

Lead vehicle – car (C). Except the tempo and hand cart, all vehicles (bus, car, scooter, SUV) were following the car at 3.6 to 16.6 s. As tempo and hand carts both have lower operating speeds, they maintained a following headway of < 1 s. This shows the risk level for cars is higher from tempos and hand carts.

Lead vehicle – hand cart (CG). All vehicles (car, auto-rickshaw, buses, rickshaw, two-wheeler) were following at a larger headway exceeding 4.8 s.

Lead vehicle – rickshaw (R). The rickshaw exhibited similar patterns to those of the hand cart.

Lead vehicle – two-wheeled (S). Since the running speed of two-wheeled vehicles is higher, the SUV's following time headway was significantly greater, i.e. 4 s. Cars and two-wheeled vehicles followed in less than the time headway of 1 s. This shows the risk level for two-wheeled vehicles is higher when the following vehicle is a car and a two-wheeled vehicle.

Lead vehicle – big car (SUV). No other vehicles were found following the big car except the rickshaw, since the running speed of big cars is high.

Lead vehicle – LCV (TE). No other vehicles except buses were found to be following at 6.65 s.

Effect of different leading vehicle type free flow – Sonai Road UP direction

Lead vehicle – auto-rickshaw (A). In free flow conditions, cyclists, cars, rickshaws, trucks and tempos followed in a higher time headway gap when compared to constrained conditions. Their time headway varied from 1.6 to 6.7 s higher than the constrained time. In contrast, two-wheeled vehicles, auto-rickshaws and SUVs maintained a larger gap in comparison with constrained vehicles as well as cyclists, cars, rickshaws, trucks and LCVs.

Lead vehicle – bus (B). No vehicle likes to follow a bus in free flow conditions because the speed of buses is too low and their frequency in fleet is also low. Even in constrained conditions, big cars, two-wheeled vehicles and hand carts (CG) do not want to follow the vehicle too close to a bus, as the speed of buses impedes the speed of the following car, when compared to auto-rickshaws. One cyclist was found following a bus in free flow conditions at a following headway of 17 s, which is the highest following headway in free flow conditions.

Lead vehicle – car (C). Trucks, tempos, auto-rickshaws and rickshaws were following the car at 1-3.75 s. As hand carts and cyclists have lower operating speeds, they maintained a following headway greater than the constrained flow of 6.1 s. In free flow, speed also remains higher, therefore the risk is higher.

Lead vehicle – hand cart (CG). No other vehicles except tractors and two-wheeled vehicles followed a hand cart at a headway of 2.2 and 4 s, which shows that no driver likes to follow a hand cart that might impede their speed in free flow conditions. However, in congested conditions, all vehicles (cars, auto-rickshaws, buses, rickshaws, two-wheelers) followed very close to the hand cart, since it impeded the speed of all motorized vehicles. Their following headway ranged from 0.65 s by two-wheeled vehicles to 2.28 s by rickshaws, since they were unable to change lanes. This shows the risk level for hand carts (CG) is higher regarding two-wheeled vehicles, as the speed in free flow is also higher.

Lead vehicle – cycle (C) and rickshaw (R). Interestingly, cycles were also found to be lead vehicles; however, the gap between a cycle and the following vehicle was found to be the lowest (≤ 4 s) for vehicles such as auto-rickshaws, two-wheeled vehicles, SUVs, tempo (LCV) and tractors, at < 4 s. These drivers feel secure even when there is a rickshaw and a cycle in front. Exceptions were two-wheeled vehicles, hand carts and LCVs, whose following time was higher, at 4 s.

Lead vehicle – two-wheeled (S). With the exception of auto-rickshaws, trucks and cycles, all other vehicles were found to be following with a larger time headway gap compared to other vehicles. Since the running speed of two-wheeled vehicles is higher, the following time headway for rickshaws, cars, SUVs, LCVs and auto-rickshaws was significantly > 5 s. This relationship is true for constrained conditions.

Lead vehicle – big car (SUV). With the exception of trucks and cycles, no other vehicles were found following the big car at < 3.3 s, since the running speed of big cars is high. The same is true in the case of congested conditions.

Lead vehicle – LCV (TE). All vehicles were following at time headway of 3.32 to 15.4 s. SUVs, trucks and two-wheeled vehicles followed at an exceptionally larger headway of > 7.9 s.

Effect of leading vehicle on headway in Shillong (Hill Roads)

Trucks maintain the highest following headway. If a bus is ahead then big cars maintain larger gaps of 15.2 s. When a car is leading, all different vehicles follow at 8-9 s intervals. In contrast, when drivers found an LCV in front, other vehicles were much closer, except for trucks, LCVs and cars. In contrast, trucks maintain a gap at a smaller distance. Auto-rickshaws create a safer feeling amongst drivers; the auto-rickshaw as leader has the lowest following headway, at 6 and 3 s. When a two-wheeler is moving ahead, the auto-rickshaw, bus and LCV maintain larger gaps compared to other types of lead vehicle. The car following headway inside and outside the city is shown in Figure 2.

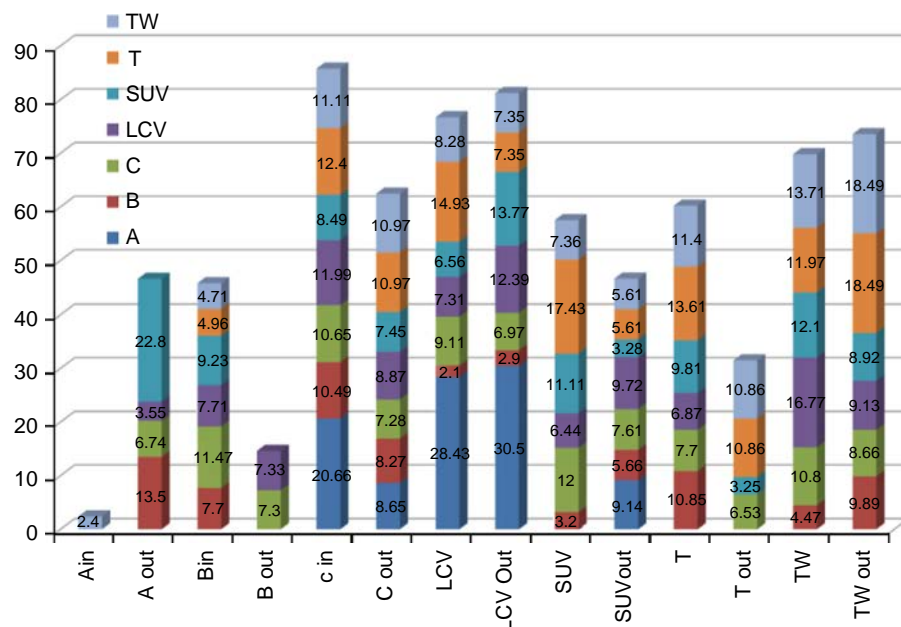


Figure 2.
Effect of lead vehicle
in both free flow and
congested conditions

Lead vehicle – auto-rickshaw (A). In free flow conditions, SUVs, buses and cars maintain a gap of 6.74 to 22.8s, whereas drivers of two-wheeled vehicles follow the time headway gap of 2.4s in constrained conditions. In contrast, LCVs maintained a lower gap in free flow at 3.55s.

Lead vehicle – bus (B). LCVs maintained similar time headway gaps of 7.5s both in the case of constrained and free flow conditions. In congested flows, vehicles such as buses, trucks and two-wheeled vehicles normally followed with a headway of <7s, except for cars. In free flow cases, the number of vehicles following the buses was very low (only two types of vehicle: cars and LCVs).

Lead vehicle – car (C). In the case of congested flow on hills, car following behaviour by other vehicles was significantly different and remained little higher than in free flow conditions. Auto-rickshaws, trucks, buses and two-wheeled vehicles maintained larger gaps compared to SUVs and LCVs in both constrained and free flow conditions.

Lead vehicle – two-wheeled (S). For bus and truck vehicle types, two-wheeled vehicles maintained a higher time headway in free flow conditions compared to congested flow. In contrast, LCVs and SUVs maintained a lower gap in free flow conditions compared to constrained conditions. LCV and SUV in free flow conditions are a danger to motorcyclists. In contrast, buses are found to be dangerous to motorcyclists in congested traffic conditions.

Lead vehicle – big car (SUV). Trucks, cars and SUVs were found to be following at higher following headways in congested environments as compared to free flow. With the exception of LCVs, all other vehicles (buses, cars, SUVs, trucks and two-wheeled vehicles) followed at less headways compared to congested flows.

Lead vehicle –truck (TW). In free flow conditions, cars, SUVs, trucks and two-wheelers followed at less time headways compared to congested conditions.

Trucks following the truck showed the highest time headway at 13.6 and 13.86 s, both in constrained and free flow conditions.

Lead vehicle – LCV (TE). Auto-rickshaws, trucks and cars maintained larger time headways when they encountered LCVs on hilly roads. In contrast, buses were found to maintain the lowest gap when they encountered LCVs in front, i.e. 2.1-2.9 s. This shows that bus drivers feel safer with LCVs and at the same time, compromise the safety limit. The following headway between LCVs and auto-rickshaws was observed to be the highest (28 and 30 s) both in constrained and free flow conditions, respectively.

Effect of flow on driver flowing

The comparison of time headway in congested and uncongested conditions is shown in Figure 3. The time headway in free flow conditions increased by 50 per cent on the same road when extended from congested to free flow conditions.

Trends and speed while following the vehicle

From the scattered plot of time headway (second) and speed (km/hr) for different vehicles, it is inferred that the number of following events for cars, SUVs, two-wheelers and LCVs is higher amongst all the different types of vehicle. It was found to be lower for auto-rickshaws, trucks, buses and LCVs. The majority of cars were running at a speed in the range of 40 and a following time headway of <20 km/hr. Similar findings are reported for SUVs. The variation of time headway was found to be >60-2 s minimum, whereas speed variation was found to be from 1 to 110 km/hr. The box plots of different vehicles show frequencies, speed and headway in terms of maximum, minimum, median and average values (Figures 4-9, respectively).

Summary of frequency, headway and speed in terms of lowest, highest, mean and median value

In Shillong city, the highest number of vehicles was following cars and the lowest were following buses, auto-rickshaws, SUVs, LCVs and trucks. This also confirms traffic composition. In contrast, in Silchar city, the highest number of vehicles followed rickshaws, two-wheelers and buses, which represent their composition and the effects on the following vehicle. The highest number of vehicles followed rickshaws, auto-rickshaws, cycles and LCVs. The lowest number of vehicles followed LCVs and tempos in Silchar city. Speed was found to be higher for SUVs in Shillong, whereas in Silchar, it was LCVs. LCVs following headway ranged from 3 to 28 s in Shillong and

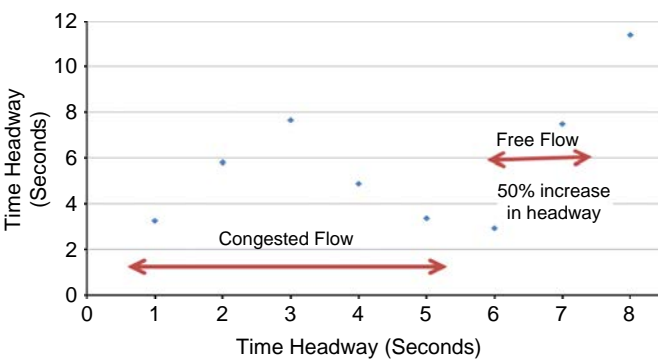


Figure 3.
Effect of flow on
driver flowing

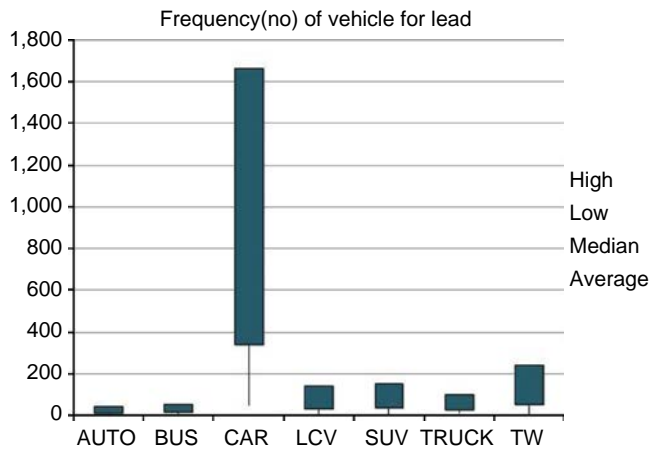


Figure 4.
Number of vehicles per
8 hr of vehicle for lead
in Shillong

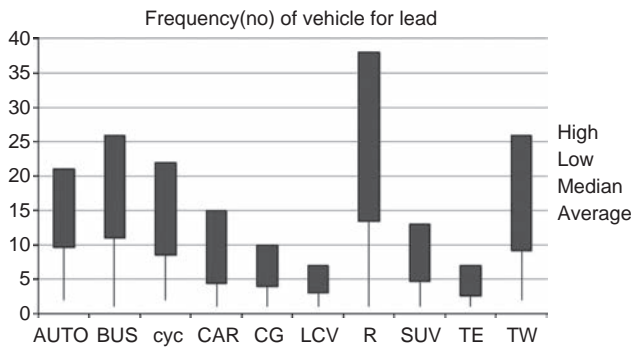


Figure 5.
Number of vehicles per
1/2 hr of vehicle for lead
in Shilchar

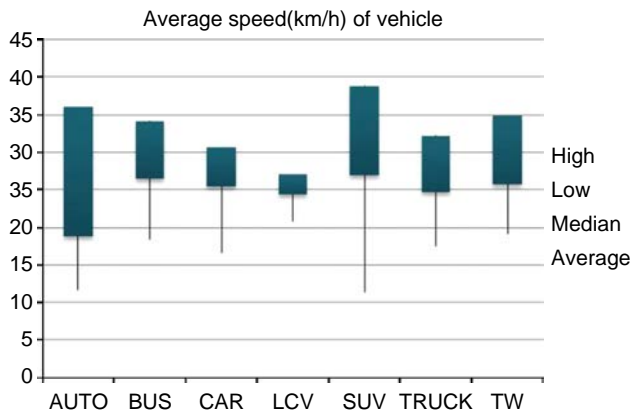


Figure 6.
Average speed (km/hr)
for different lead vehicle
in Shillong

4 to 58 s in Silchar. In both cities, the ranges were too large compared to the other lead vehicle. This also indicates that vehicles following LCVs have typical characteristics that also conform to the literature. In following headway, SUVs ranged from 5 to 14 s in Shillong and 3 to 12 s in Silchar. Hand carts and cycle-rickshaws could not go beyond

Figure 7.
Average speed(km/hr)
for different lead vehicles
in Shilchar

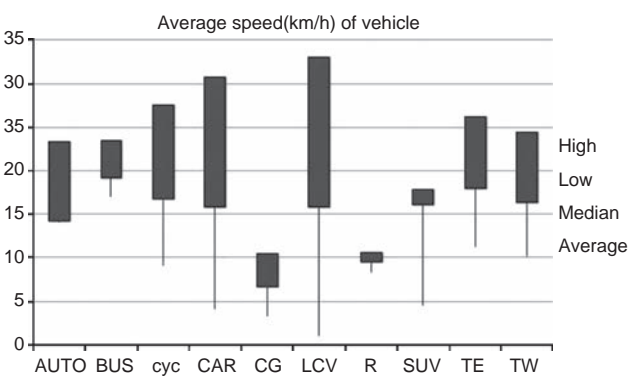


Figure 8.
Average time headway
in Shillong for different
lead vehicle (Sec)

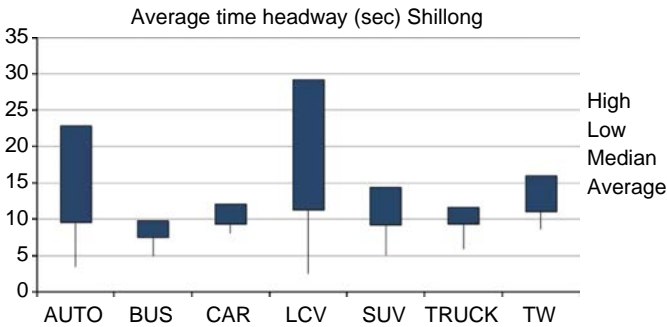
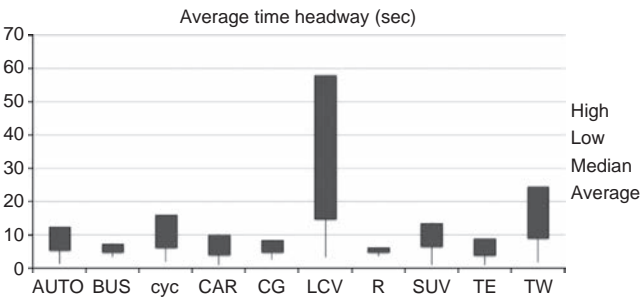


Figure 9.
Average time headway
in Shilchar for different
lead vehicle (Sec)



a speed of 10km/hr, whereas their respective following headway ranged from <2 to 5s. This indicates that they are compromising the safety threshold. The speed of trucks in Shillong were in the range of 18-32 km/hr, contrasting with 10-125 km/hr in Silchar city, and their respective headways ranged from 8 to 16s and 4 to 22s. The lowest following headway conforms to the bus, truck and rickshaw in both cities, which ranged from 5 to 10 s in Shillong and even less in Silchar, 5 to 12 s in Shillong and higher in Silchar at 5 to 25 s, and 2 to 5 s for rickshaws in Silchar, which constitutes a high risk. Headway is recommended for use in enforcement purposes, because small headways generate potentially dangerous situations. However, TTC should be used

when a certain traffic environment is to be evaluated in terms of safety, because it indicates the actual occurrences of dangerous situations.

Conclusion

Headway characteristics are of great importance for planning, analysing, designing and operating roadway systems (Jakimavicius and Burinskiene, 2009; Mesarec and Lep, 2009). Therefore, data must be analysed as accurately as possible based on the real behaviour of drivers (Kerner, 2009).

In the driver-following conditions, a large number of drivers adopt headways which are less than safe. This reveals the concentration of short headways, in that many drivers choose less than safe headways. In the case of cycles as the lead vehicle in particular, the following vehicles (such as auto-rickshaws, cycles and tempos) are crossing the time headway limit. This is due to the high risk-ability of the driver population, which results in safety reduction. Time headway in free flow conditions increased by 50 per cent on the same road when extended from congested to free flow conditions. The number of following events for cars, SUVs, two-wheelers and LCVs is higher amongst all different types of vehicle compared to the auto-rickshaw, truck and bus. The presence of non-motorized vehicles in mixed traffic creates relatively short headways, resulting in the possibility of higher accident rates. The result from this research paper shows the effect the effects of type of lead vehicle on following headway in mixed traffic condition in India on different category of roads and flow. This will also provide an understanding of how the choice, which is part of the following car's process, varies with local conditions and an assessment of the evidence if choice is affected by the behaviour of the driver of one or more vehicles ahead. Time headway or inter-arrival time is one of the important flow characteristics which affects the safety, level of service, driver behaviour and capacity of transportation systems. Time headway is used to determine the opportunity for passing, merging and crossing lanes on NH. This also gives more insight into the behaviour of the traffic. The distribution can be used as an input to traffic simulation models. To develop the entrance ramp on NH and urban roads, headway distribution is required.

Headway significantly influence the investigation and simulation of ramp metering strategies depend on headway, therefore it is vital contributing factor for the design and operation of vehicles and identification of causative mechanism or breakdown process in traffic process. The accuracy of headway impacts road design and intelligent traffic signal control. Results from this study can be used for enforcement purposes in city to avoid collision at small headways between vehicles.

References

- Arasan, V.T. and Koshy, R.Z. (2003), "Headway distribution of heterogeneous traffic on urban arterials", *Journal of the Institution of Engineers*, Vol. 84 No. 3, pp. 210-215.
- Brackstone, M., Waterson, B. and McDonald, M. (2009), "Determinants of following headway in congested traffic", *Transportation Research Part F: Traffic Psychology and Behaviour*, Vol. 12 No. 2, pp. 131-142.
- Evans, L. and Rothery, R. (1976), "The influence of forward vision and target size on apparent inter-vehicular spacing", *Transportation Science*, Vol. 10 No. 1, pp. 85-101.
- Evans, L. and Wasielewski, P. (1982), "Do accident-involved drivers exhibit riskier everyday driving behavior?", *Accident Analysis & Prevention*, Vol. 14 No. 1, pp. 57-64.

- Highway Capacity Manual (2000), *Council Highway Capacity Manual*, Transportation Research Board, National Research, Washington, DC, pp. 1134.
- Jakimavicius, M. and Burinskiene, M. (2009), "A GIS and multi-criteria-based analysis and ranking of transportation zones of Vilnius city", *Technological and Economic Development of Economy*, Vol. 15 No. 1, pp. 39-48.
- Katti, B.K. and Pathak, R.H. (1985), "A study on headway distribution models for the urban road sections under mixed traffic conditions", *Highway Research Bulletin – Indian Roads Congress*, Vol. 26, pp. 1-30.
- Kerner, B.S. (2009), *Introduction to Modern Traffic Flow Theory and Control: the Long Road to Three-Phase Traffic Theory*, 1st ed., Springer, Berlin, New York, NY, 278pp.
- Mesarec, B. and Lep, M. (2009), "Combining the grid-based spatial planning and network-based transport planning", *Technological and Economic Development of Economy*, Vol. 15 No. 1, pp. 60-77.
- Michael, P.G., Leeming, F.C. and Dwyer, W.O. (2000), "Headway on urban streets: observational data and an intervention to decrease tailgating", *Transportation Research Part F, Traffic Psychology and Behaviour*, Vol. 3 No. 2, pp. 55-64.
- Mukherjee, S.K., Rao, S.K. and Raichowdhury, M.L. (1988), "Fitting a statistical distribution for headways of approach roads at two street intersections in Calcutta", *Journal of the Institution of Engineers. India. Civil Engineering Division*, Vol. 69, pp. 43-48.
- North Eastern Region Vision (2008), *Ministry of Development of North East Region*, DONER, North Eastern Council, Ministry of Development of North East Region, Government of India, New Delhi.
- Parker, M.T. (1996), "The effect of heavy good vehicles and following behavior on capacity at Motorway Roadwork Sites", *Traffic Engineering and Control*, Vol. 37 No. 9, pp. 524-531.
- Postans, R.L. and Wilson, W.T. (1983), "Close-following on the motorway", *Ergonomics*, Vol. 26 No. 4, pp. 317-327.
- Sayer, J.R., Mefford, M.L. and Huang, R. (2003), "The effect of lead vehicle size on driver following behavior: Is ignorance truly bliss?", *Proceedings of the 2nd International Driving Symposium on Human Factors in Driver Assessment, Training and Vehicle Design*, University of Iowa, Park City, Utah, 21-24 July.
- Survey of India (2013), "Shillong City Map", Survey of India, New Delhi.
- Svensson, Å. (1998), "A method for analysing the traffic process in a safety perspective", doctoral dissertation, University of Lund, Lund.
- Van Winsum, W. and Heino, A. (1996), "Choice of time-headway in car-following and the role of time-to-collision information in braking", *Ergonomics*, Vol. 39 No. 4, pp. 579-592.
- Yi, P., Zhang, Y., Lu, J. and Lu, H. (2004), "Safety-based capacity analysis for Chinese highways – a preliminary study", *IATSS Research*, Vol. 28 No. 1, pp. 47-55.
- Zhang, G., Wang, Y., Wei, H. and Chen, Y. (2007), "Examining headway distribution models with urban freeway loop event data", *Transportation Research Record 1999*, Transportation Research Board Business Office, NW, Washington, DC, pp. 141-149.
- Zwahlen, H.T., Oner, E. and Suravaram, K. (2007), "Approximated headway distributions of free-flowing traffic on Ohio freeways for work zone traffic simulations", *Transportation Research Record 1999*, Transportation Research Board Business Office, NW, Washington, DC, pp. 131-140.

Further reading

- Abtahi, S.M., Tamannaie, M. and Haghshenash, H. (2011), "Analysis and modelling time headway distributions under heavy traffic flow conditions in the urban highways: case of Isfahan", *Transport*, Vol. 26 No. 4, pp. 375-382.

-
- Evans, L. and Wasielewski, P. (1983), "Risky driving related to driver and vehicle characteristics", *Accident Analysis & Prevention*, Vol. 15 No. 2, pp. 121-136.
- Greenberg, I. (1966), "The log-normal distribution of headways", *Australian Road Research*, Vol. 2 No. 7, pp. 14-18.

About the authors

Dr Ravindra Kumar earned his PhD (Engineering) at the Edinburgh Napier University (UK) and a Master's Degree (Engineering) at the University of Roorkee (now Indian Institute of Technology). He has worked for the premiere Central Road Research Institute India for the last 15 years and is a Principal Scientist in the Transport Planning department. His current research focuses on transportation and road network planning, evaluating and mitigating the environmental impacts assessment of road transport on urban air quality, with a special focus on rehabilitation and resettlement planning, real-world driving cycle and vehicular emission using advanced instruments and developing emission factors based on onboard, micro simulation and chassis dynamometer. He supervises a number of under- and postgraduate project students, besides research and consultancy research. He is a life member of the Indian Road Congress, and a member of CILT UK. He has completed over 20 sponsored research and consultancy projects, published more than 40 research papers in various journals and presented at national and international conferences. Dr Ravindra Kumar is the corresponding author and can be contacted at: ravindra261274@yahoo.co.in

Dr Purnima Parida is a Principal Scientist and Head at the Transportation Planning Division of Central Road Research Institute, New Delhi, India. Some of the significant projects handled by Dr Parida include research on the development of qualitative and qualitative level of service models for sidewalks, estimation of energy loss due to congestion, development of parking norms for residential and commercial areas and connectivity of an airport terminal with the city transport system. For her work in planning for pedestrian facilities, she was invited by the World Bank to deliver a presentation in the Transforming Transportation workshop. She received the IRC Medal for her work on Estimation of fuel loss during idling of vehicles at signalized intersections in Delhi. She is a member of Urban Roads, Streets & Transport Committee (H-8 Committee) of Indian Roads Congress. She has completed over 30 sponsored research and consultancy projects, published more than 70 research papers in various journals and presented at national and international conferences.

Wafaa Saleh is a Professor of Transport Engineering at the Transport Research Institute/ School of Engineering and the Built Environment at the Edinburgh Napier University. Wafaa's research and teaching areas include transport modelling, travel demand forecasting, modelling travel behaviour, transport and the environment, transport safety, transport management in developing countries and traffic engineering. Wafaa's first degree is in civil engineering and her master and PhD degrees are in Transportation Engineering and Modelling. Wafaa Chairs the Travel Demand Management (TDM) Symposium and teaches on Napier's MSc in transport planning and engineering and on a number of undergraduate programmes.